

FINGERTEC
www.fingertec.com



ingress

THE PERFECT SYSTEM
FOR ADVANCED
ACCESS CONTROL



A great vision, a decisive beginning

THE COMPANY

Who are we?

We were born in 2000 with a visionary objective of bringing the then high-tech fingerprint technology normally used by government sector into a technology that is viable, affordable and reachable by mass commercial market in access control and time and attendance industry. Today, the brand FingerTec has spread its wings to over 150 countries around the world.

Our Vision

Our on-going CMMI (level III) certified R&D efforts are dedicated to deploy the trend of Internet of Things (IoT) and smart office concepts to enhance security measures that continue to earn us more acclaimed patents and higher market share in the access control industry.

We Make Things Easy

This is our promise to customers who have placed their trust in our brand FingerTec and products. We Make Things Easy to include Ingress, the advanced access control system, and turned the sophisticated security system to an ease-of-use system for organizations of all types and sizes.

A woman with long, wavy reddish-brown hair is wearing a black police uniform, including a peaked cap with a silver badge. She is holding a black handgun with both hands, pointing it directly at the camera. The background is a dark, neutral grey.

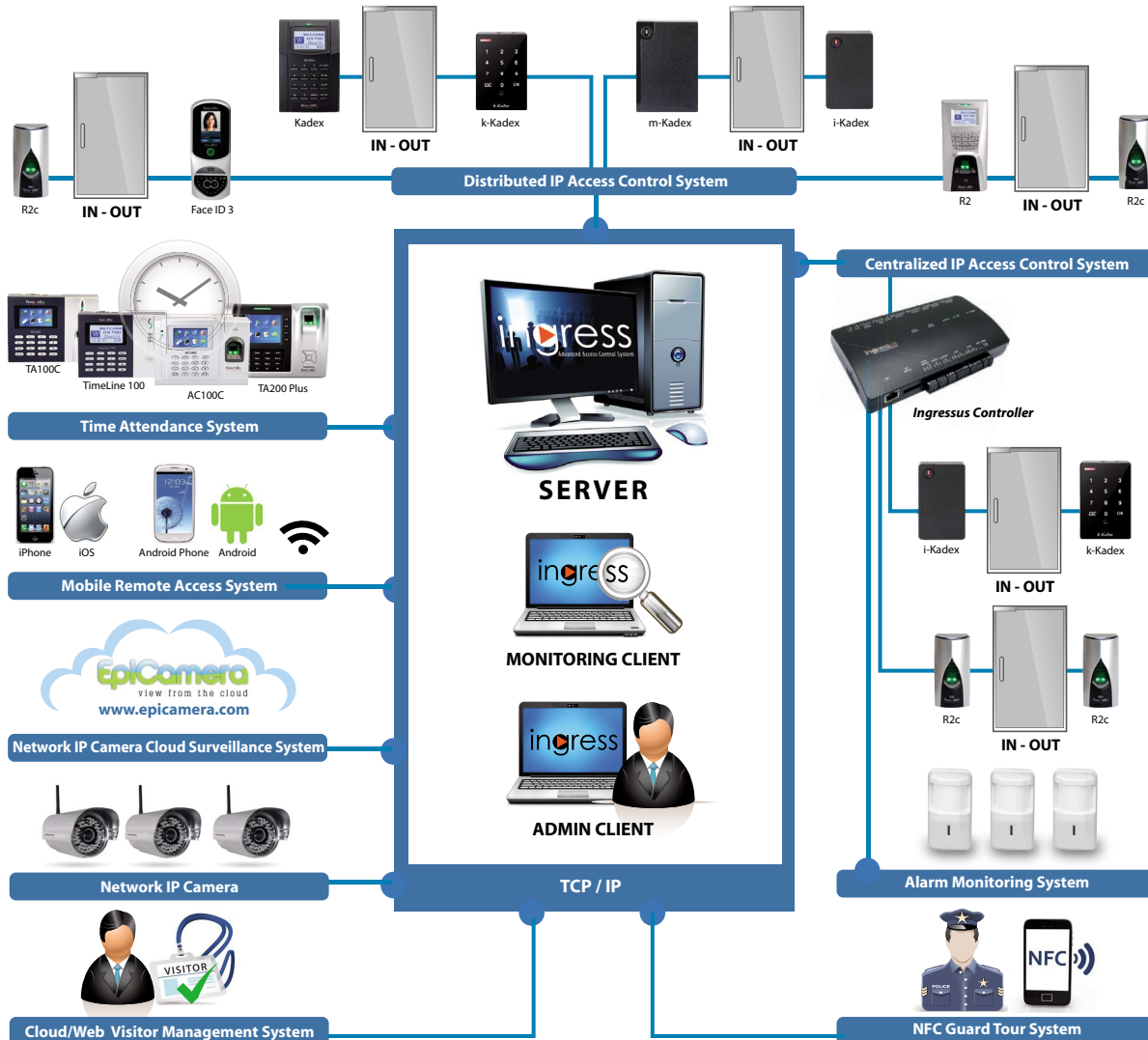
Access to higher ground of security

THE **ingress** ACCESS CONTROL SYSTEM

All physical business operations require access control system to secure their office premises. Ingress is designed to wield the four main elements that make up an access control system, which are credentials, readers, locking devices and controllers/panels in all-encompassing integrated management application. Ingress further extends its security measures to include more security associated activities like cloud video surveillance, alarm monitoring, intrusion detection, remote access control via mobile app and time & attendance and etc., and bring the safety prevention to a higher ground to meet the requirements of tomorrow's smarter and more complex office environment.

COMPREHENSIVE **ingress** SOLUTIONS

All-rounded security measures



THE BENEFITS

- Utilizing the most advanced credentials for door access system including biometrics, smart cards, PINs and passwords, for a combination of security methods, Ingress system ensures convenience without jeopardizing security level required.
- Connecting alarm system for instant notifications during emergency to reduce risks and danger.
- Monitoring is made easy with visual floor plans, push notifications, remote monitoring, remote access control and real-time view of happenings.
- All security data is centralized for comprehensive audit trail and generating a variety of crucial reports.
- Linkage to video surveillance for footage of crucial moments assisting security investigation, if any.
- Provide automation of time attendance which is linkable to payroll system for a more effective staff scheduling and workforce management.
- All in all, Ingress provides holistic security solution which covers door access system, video surveillance, monitoring system, alarm control, time attendance and many more in one centralized efficient system.

Protecting people, assets and properties



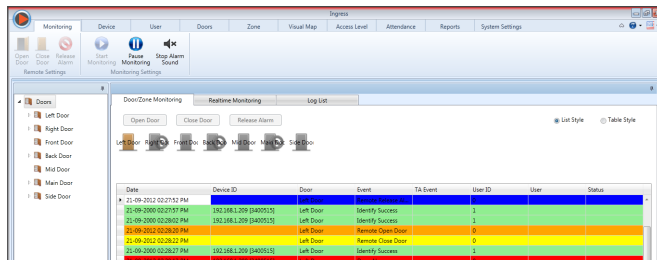


ingress SOFTWARE

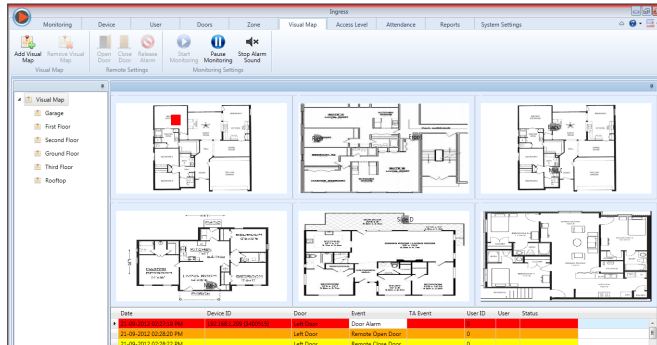
Security care in all aspects

Real-time Monitoring

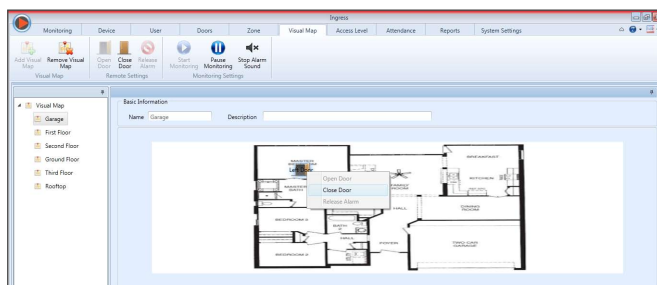
Monitoring: Real-time access control event, fire alarm and transaction log monitoring.



Visual Map: Intuitive graphical maps are completely customizable to let you monitor activities.

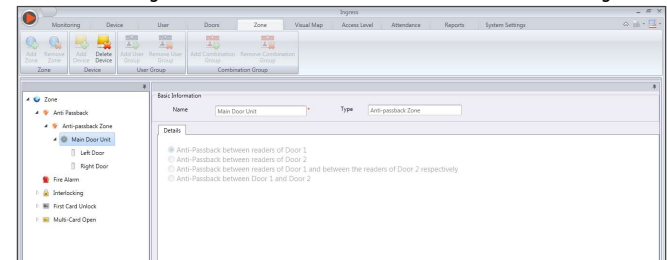


Remote Control: Control access activities directly from the monitoring station.

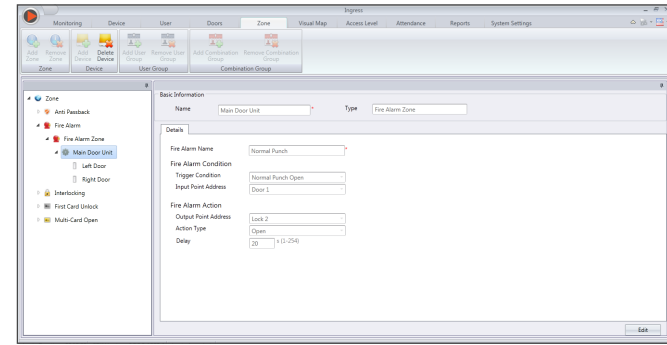


Access Control

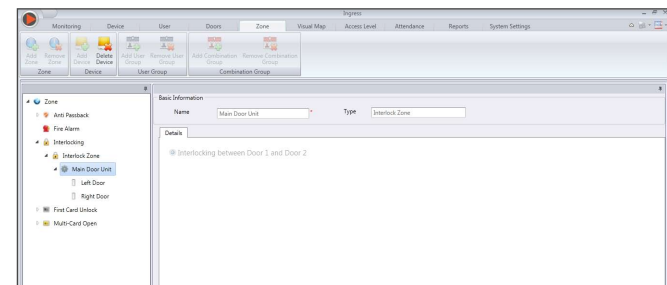
Anti-Passback: A security mechanism preventing an access card or similar device from being used to enter an area a second time without first leaving it.



Fire Alarm Linkage: Allows the automatic unlocking of emergency fire doors in the event of a fire.

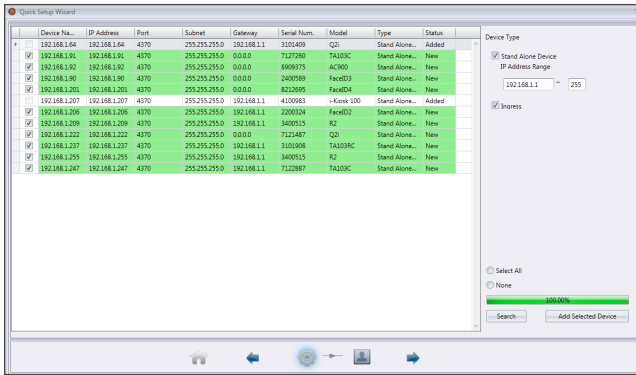


Interlock: The interlock function enables extra security by ensuring a sequence where one door can only be released when other doors are closed.

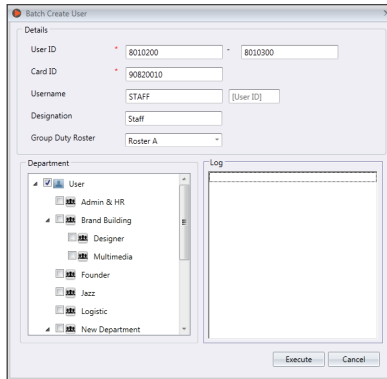


Additional Features

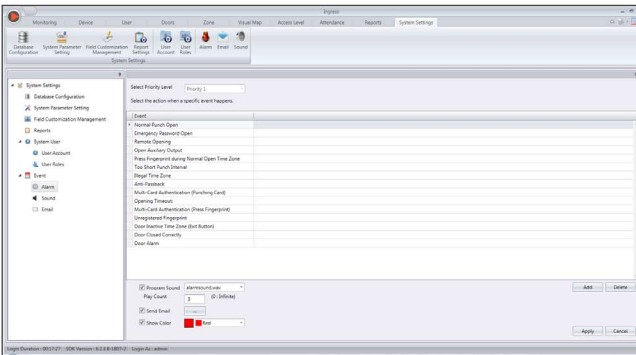
Quick Setup: Built-in Quick Setup Wizard for easy initial startup.



Batch Create User: Provides method to import large amount of users from Excel sheets or pre-created card users.

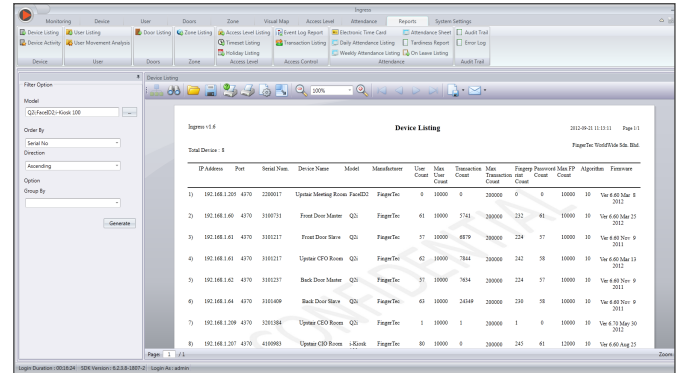


Event Priority: Configurable event priority, recipient email and sound alert.

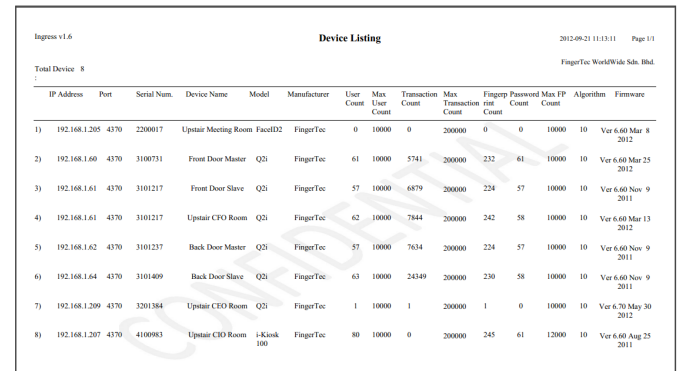


Advanced Reporting

29 Comprehensive Reports: Provides 29 comprehensive combinations of data listing, configuration, activity, audit trail, incident, time and attendance, and event reports.



Water Mark: User definable reports, with customizable watermark for background image.



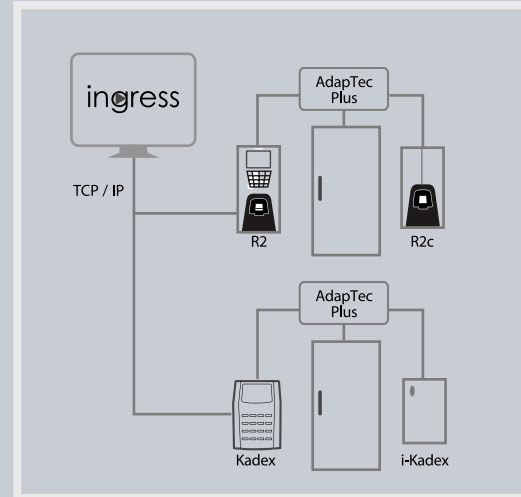
Save Reports into Various Formats: Print and save reports into PDF, XLSX, RTF, HTML, CSV, TXT formats and more.



STANDALONE TERMINAL (DISTRIBUTED IP) IN **ingress**

For small/medium scale implementations

- Straightforward, no control panel needed. The average cost of one-door installations is minimal when the number of doors serviced is lower.
- Install hardware only at specific access points to ensure no wastage of the controller's capacity.
- By not requiring elaborate wiring methods for one-door installations, installation costs and time spent are kept low.
- Being able to utilize existing network infrastructure, less time & resources spent.
- Monitoring is physically close for management as it is better suited for SMEs that cover comparatively small land areas and less than 50 doors.



Efficiently manage sophisticated
open close mechanism

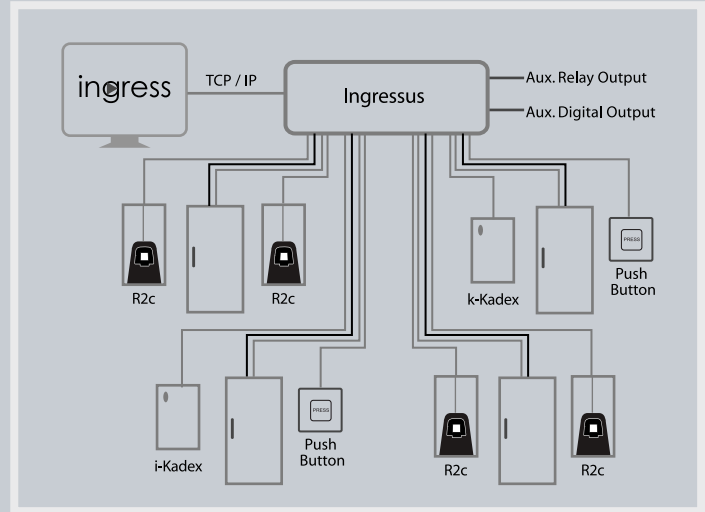


FINGERTEC

CONTROL PANEL (CENTRALIZED IP) IN **ingress**

For large scale implementations

- A single controller can control multiple doors, thus reducing cost per door for large-scale installation.
- When servicing more doors, the capacity of the controllers are fully utilized, making the most out of your investment.
- Only minimal number of hardware need to be installed on-site as the controller only needs to be set up once.
- Centralized, all data are kept in one single location, making it faster to process large amounts of data from different locations.
- Monitoring can cover bigger areas as it is better suited for large-scale implementations




Efficiently manage multiple sophisticated
open close mechanism



TIME & ATTENDANCE APPLICATION IN **ingress**

When planning a security system for physical access control, quite many companies require and regard time and attendance as one of the key components to also be considered holistically.

As a prominent Time and Attendance system provider for its TCMS V2 software and TimeTec solutions, the Ingress system naturally inherits the core value of time and attendance from these systems, delivering customers with superb Time & Attendance modules that work fine with access control security systems.



When mankind starts
to time, the value
tends to multiply

MOBILE APPLICATION IN gress



Secured kingdom of far far away



Ingress Mobile is the mobile application that links your mobile devices to the Ingress Server. This is a must-have app for security manager to remotely monitor the entire access control system. It is available for download from Google Play and Apple App Store without extra charges.



Big Mama is watching you

VSaaS APPLICATION IN gress

Cloud Surveillance in the form of VSaaS (Video Surveillance as a Service) is the future trend and is used to compensate for the lack of VMS (Video Management System) functionalities in any conventional surveillance system. As such, the Ingress Access Control System is incorporated with our in-house developed EpiCamera Cloud Surveillance to provide you seamless VSaaS integration for IP Cameras that support FTP features.

Get a free trial from www.epicamera.com



IP NETWORK CAMERA APPLICATION IN *ingress*



The Ingress software works with Milestone, the world leading IP video surveillance software company. It provides IP video surveillance software to be installed into an NVR (server or PC) to work with IP cameras. Milestone can be linked up with a majority of branded IP cameras in the market.



Alert and manage emergency

SENSOR AND ALARM APPLICATION IN **ingress**

A standalone and separate sensor and alarm system can be connected to the Ingressus Controller. Powered by Ingress software, it can produce visual and audio alerts to draw attention of the security officer, making it a better system for emergency management.



Welcome and unwelcome, preapprove and disapprove

WEB/CLOUD VISITOR MANAGEMENT APPLICATION IN **ingress**

A web/cloud based visitor management application is working seamlessly with Ingress Access Control system to manage and monitor visitors' door access activities in the premises. All movements of the visitors captured and displayed in the Monitoring Page for the guards to know their whereabouts during the visit. These records are stored in Ingress software as transaction logs for checking and reporting purposes. Any misbehavior of the visitors such as leaving without check out, losing cards and etc will be kept as records under their individual profile.

NFC GUARD TOUR APPLICATION IN *ingress*

An informed
point-to-point route to safety

An innovative guard tour monitoring system, the NFC-tracker, uses Near Field Communication (NFC) technology to streamline guard tours with real-time transmission of location and time data, as well as keeping hardware costs low to help increase your bottom line. Ingress web/cloud guard tour application also integrates with TimeTec Cloud Time and Attendance System to make it a perfect system to manage security guards.

THE IMPLEMENTATION GUIDANCE

All roads lead to Rome



Webinar
Training made
easy online



Video guide
Watch and
learn



**Technical
tips**
Learn tips and
troubleshooting



**Technical
Support**
Handholding
local partners



THE TECHNICAL SUPPORT

24/7/365

We are here for you,
in case you need us



By email

Drop us a line anytime and
we shall reply



By TeamViewer

Let us take care of
it for you



By Skype

Let's communicate &
solve problems



By Livechat

We standby to help you

THE TRIAL VERSION

Unlocking Ingress's value
without risk by free trial

One Software With Many Possibilities!

GOOD NEWS to all FingerTec customers.

Ingress is available for FREE with the purchase of any of our products.

To preview Ingress's amazing features, try out Ingress trial version at

<http://www.fingertec.com/trialversion/ingress/> and **sign up today!**

COPYRIGHT NOTICE

All rights reserved. No part of this book may be reproduced or transmitted in any forms or by any means, electronic or mechanical, including photocopying, recording, or by any information storage and retrieval system, without written permission from Timetec Computing Sdn Bhd. Every precaution has been made to supply complete and accurate information. Information in this document is subject to change without prior notice.

DISCLAIMER

No person should rely on the contents of this publication without first obtaining advice from a qualified professional person. The company expressly disclaims all and any liability and responsibility to any reader or user of this book, in respect of anything, and of the consequences of anything, done by any such person in reliance, whether wholly or partially, upon the whole or any part of the contents of this book.

TIMETEC COMPUTING SDN BHD



© 2014 Timetec Computing Sdn Bhd. All rights reserved. • 092014